


Quality Circle
iNICQ
NICQ
2021-22

August 12th, 2020
 3:00PM Eastern



1

Webinar Planning Team

 John Lester BSc NICQ Consultant	 Denise Zayack RN, MPH Senior Consultant for QI & Education	 Drew Arnold Marketing & Communications Manager
 Barbara Boushon RN, BSN iNICQ Consultant	 Pam Ford iNICQ Coordinator	 Sonia Darrow QI & E Assistant



2

Webinar Presenter



John Lester BSc

NICQ Coordinating
Consultant


Quality Leader
NICQ Micropreemie 2
Homeroom



3

Today

- What we've learned about the value of participation in VON collaboratives
- VON Membership 2020: Quality Circle, iNICQ and NICQ
- iNICQ and NICQ 2021-22 Improvement Topics
- Next steps



4

Why is continued participation important?

- Building trust and transparency
- Acting locally and being a part of a global movement
- Demonstrating sustainable improvements
- Being part of a community
- Learning together
- Optimizing quality during challenging times




5

What have current teams and member centers said?

Value of Participation in VON collaboratives

- Families as Partners
- Teamwork
- Data
- Learning from other centers
- QI Coaching
- Measurable improvement




6

What have current teams and member centers said?

Current Challenges


- Staff turnover
- Senior leadership changes
- Funding for QI and VON involvement



7

Measurable Improvement

- VON
- Initiative
- Homeroom/collaborative



8

Summary VON QI Impacts since 1995

Economic Implications of [VON] Neonatal Intensive Care Unit Collaborative Quality Improvement¹

- Average cost to each center for 1995-96 participation = \$68,206
- Average **saving** per center addressing infection prevention in 1996 = **\$2.3M**


[VON] Collaborative Quality Improvement for Neonatal Intensive Care²

- **Reduced** infection rate (coag neg staph) 1994-1996 from **22.0% to 16.6%**
- **Reduced** supplemental O₂ at 36 weeks 1994-1996 from **43.5% to 31.5%**

Improving Care for Neonatal Abstinence Syndrome³

- **Decreased** Length of Stay (LOS) 2012-2014 from **21 days to 19 days**

¹ Pediatrics January 2001, 107 (1) 23-29; DOI: <https://doi.org/10.1542/peds.107.1.23>
² Pediatrics January 2001, 107 (1) 14-22; DOI: <https://doi.org/10.1542/peds.107.1.14>
³ Pediatrics 2016 May;137(5):e20153835. doi: 10.1542/peds.2015-3835



9

Summary VON QI Impacts since 1995


Using Standardization to Create a High Reliability System of [Neonatal Abstinence Syndrome] NAS Care¹

- **Reduced** LOS in 2014 by **9.9 days** per patient
- **Reduced** cost in 2014 by **\$429,750**

A Collaborative Multicenter QI Initiative to Improve Antibiotic Stewardship in Newborns²

- **Reduced** median Antibiotic Utilization Rate (AUR) in 2016-2017 from **16.7% to 12.1%** for a 34% relative risk reduction

¹ VON Annual Quality Congress Proceedings 2014, New Hanover Regional Medical Center, Betty H. Cameron Women's and Children's Hospital, Wilmington, NC
² Pediatrics December 2019, 144 (6) e20190589; DOI: <https://doi.org/10.1542/peds.2019-0589>

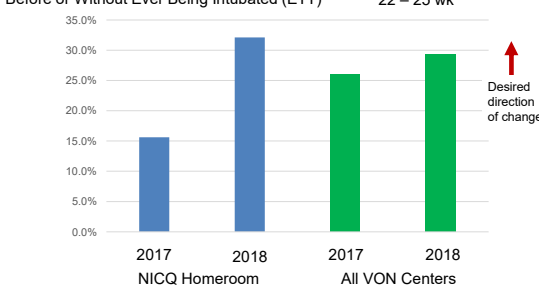


10


PBP to Improve Lung Injury

Promote nasal CPAP for initial stabilization and following extubation

Nasal Continuous Positive Airway Pressure (NCPAP) Before or Without Ever Being Intubated (ETT) 22 – 25 wk



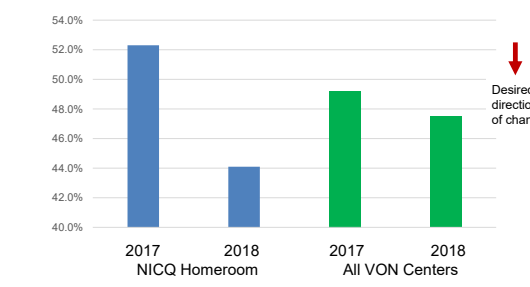
Center	2017	2018
NICQ Homeroom	~15%	~32%
All VON Centers	~26%	~29%




11

Decrease Rates of Chronic Lung Disease (CLD) in infants < 1000g

Chronic Lung Disease at 36 weeks Inborn Infants < 1000g



Center	2017	2018
NICQ Homeroom	~52%	~44%
All VON Centers	~49%	~47%



12


VON Day Audits – QI Measurement

VON Critical Transition Audit measures processes, practices and procedures for Critical Transitions.

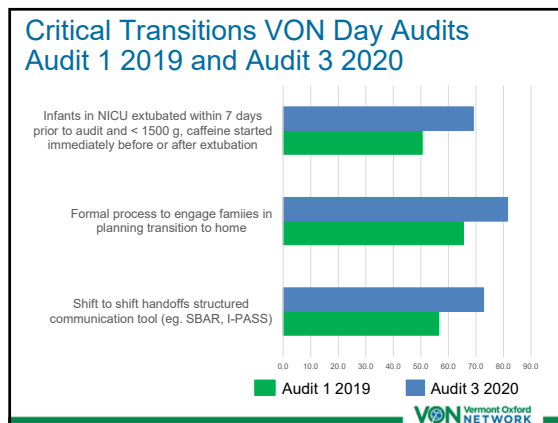
Audits are conducted twice annually throughout the collaborative.

iNICQ Critical Transitions 2019 revealed variability in systems of care and identified opportunities for improving NICU transitions in areas of communication, teamwork, family integration, and standardization.¹

¹ Journal of Perinatology <https://doi.org/10.1038/s41372-020-0720-3>




13




14

Quality Circle with iNICQ Structure



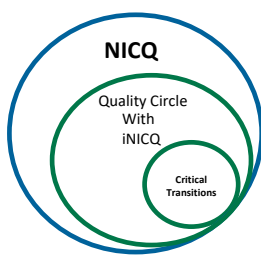
Benefits:

- Basic and Data level features
- VON QI Foundations Course
- Full Improvement Library – Including NAS, previous AOCs, Antibiotic Stewardship in 2021
- New QI courses added annually
- Critical Transitions Collaborative
 - Webinar series
 - VON Day Audits (2 annually)
 - Collaborative discussion forum
 - AQC full day collaborative program
 - Faculty review of a poster with AQC
- AQC Attendance discount
- CME/CNE/CPE/MOC Part 4




15

Quality Circle PLUS NICQ



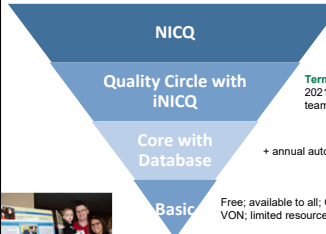
Benefits:

- Quality Circle with iNICQ features
- **Homeroom model** focused on phases of care addressing Critical Transitions
- **Homeroom-dedicated faculty teams**
- Virtual launch meeting early 2021 includes basic and advanced QI methods training; Homerooms
- **ONSITEs in 2022 (hopefully)**
- **Custom VON data reports; data transparency within Homerooms**
- AQC attendance discount; 2 day collaborative program



16

2021-22 Membership Tiers




NICQ
Term: Contract, Biannual subscription; \$20,000 in 2021 returning NICQ teams; modest increase in 2022 if live mtgs; \$25,000 new teams

Quality Circle with iNICQ
Term: Contract, Annual auto-renew; \$7,000 in 2021 for returning iNICQ teams; \$7,500 for new teams

Core with Database
+ annual auto-renewal; Basic Member features +

Basic
Free; available to all; Cochrane at VON; limited resources on website



17

Critical Transitions


What is a Critical Transition?
Any change in status or plan of care, site of care, or care team. In newborn care, these changes happen multiple times from birth to home, and frequently through each phase of care. Each transition can affect the outcome of the infant and experience of the family.

Collaborative Level Aim Statement:
By (date) all transitions are Safe, Timely, Efficient, Effective, Equitable, Patient & Family-centered, and Socially responsible* (STEEEPS)

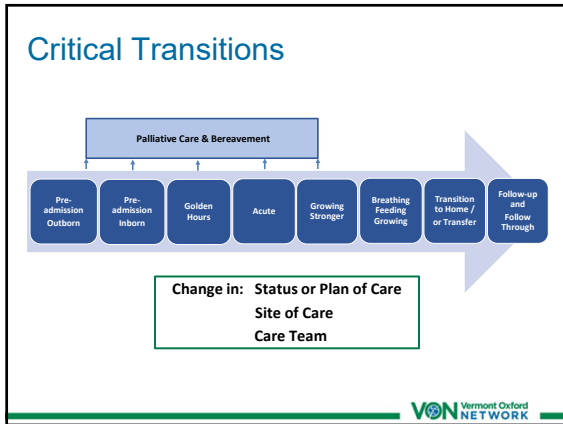
Key Drivers:

- **Teamwork including Communication**
- **Families as Partners including EBCD**
- **Health Equity**
- **QI Methods including Standardization**

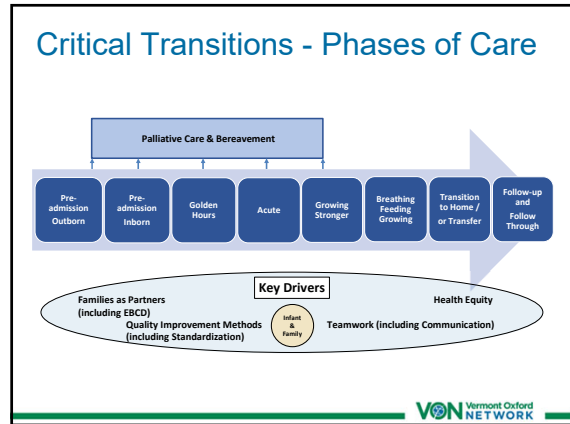
* A descriptor added by VON 2019



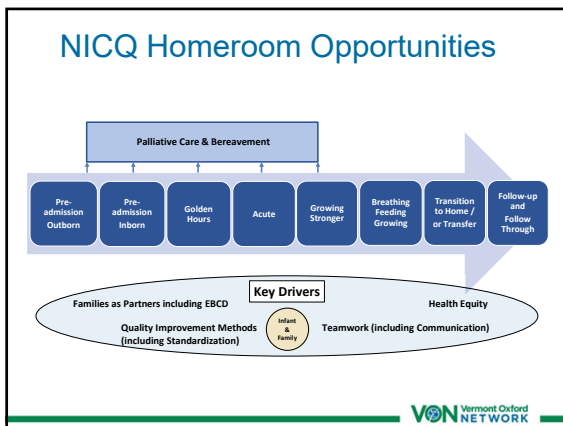
18



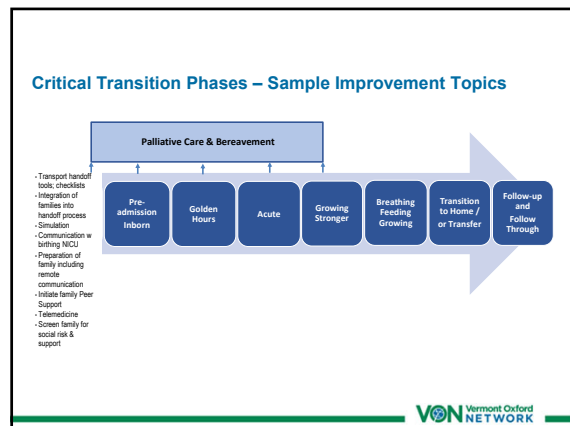
19



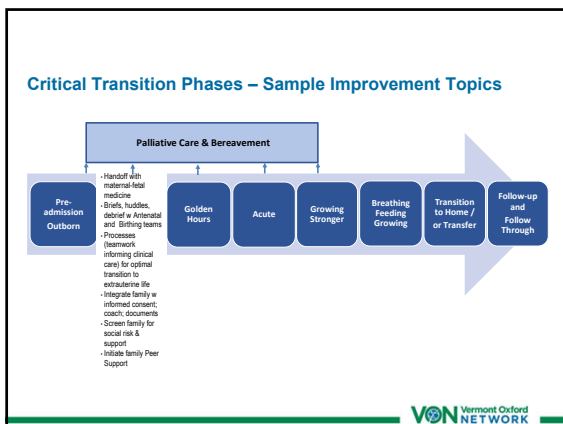
20



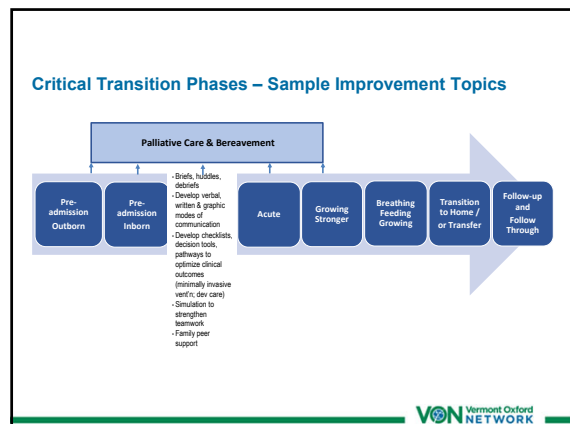
21



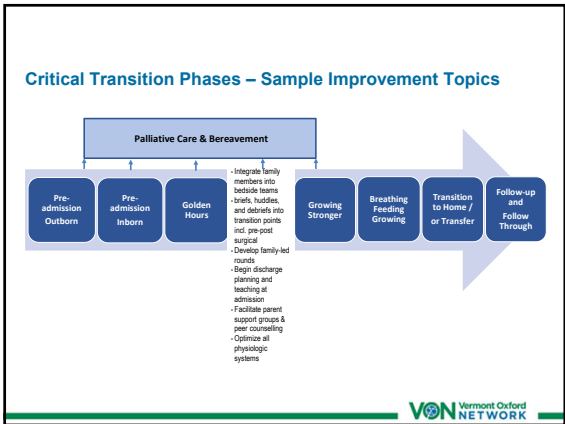
22



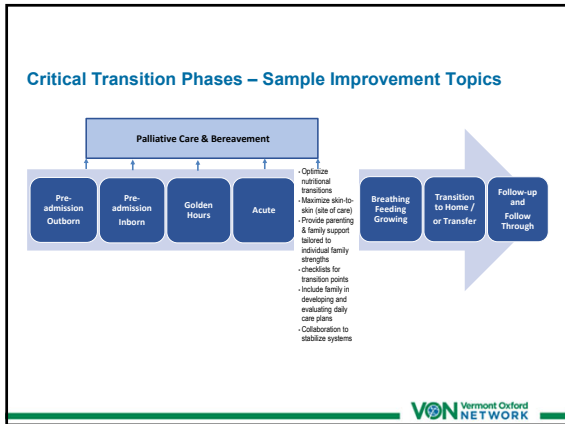
23



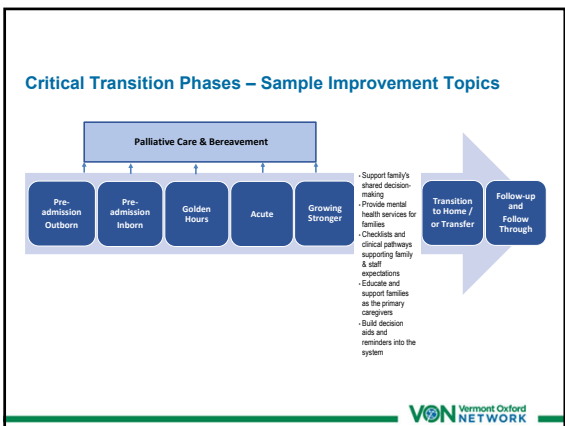
24



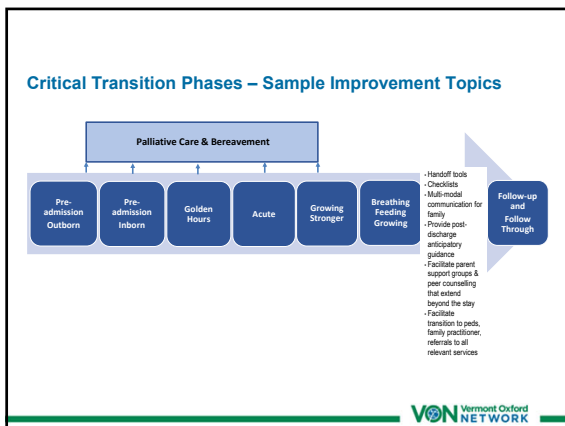
25



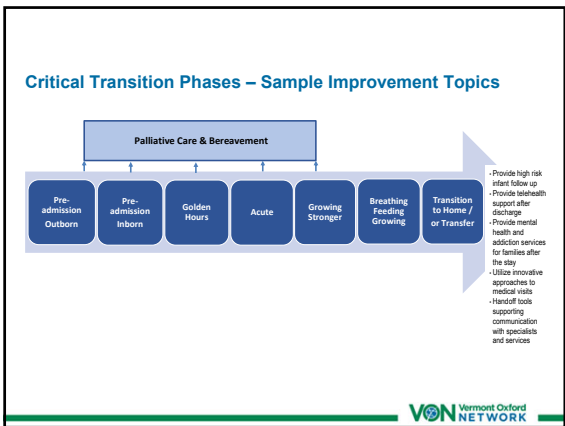
26



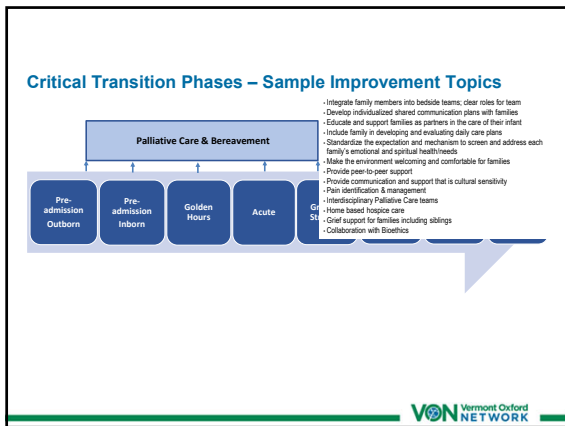
27



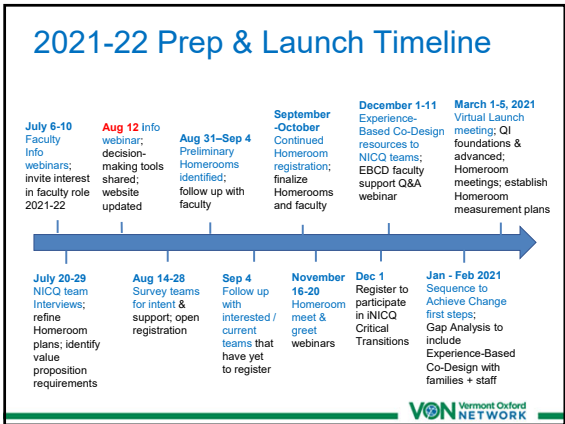
28



29



30



31

- ### VON Support for Decision Making
1. Websites
 2. Meeting recording
 3. Quality Circle and NICQ one-pager
 4. Phone (or email) a friend
 5. Survey – August 14th – 28th
 6. Process for determining improvement focus/Homeroom – August 19th
- VON Vermont Oxford NETWORK

32

For more information:

NICQ: Sonia Darrow – sdarrow@vtoxford.org
P: 802.865.4814, ext 239

iNICQ: Pam Ford – pam@vtoxford.org
P: 802.865.4814, ext 204

Other Quality Circle opportunities: either Sonia or Pam

VON Vermont Oxford NETWORK

33

Your Turn

Questions?

Comments?

Feedback?

VON Vermont Oxford NETWORK

34

Thank you for your continued support and interest!

VON Vermont Oxford NETWORK

35